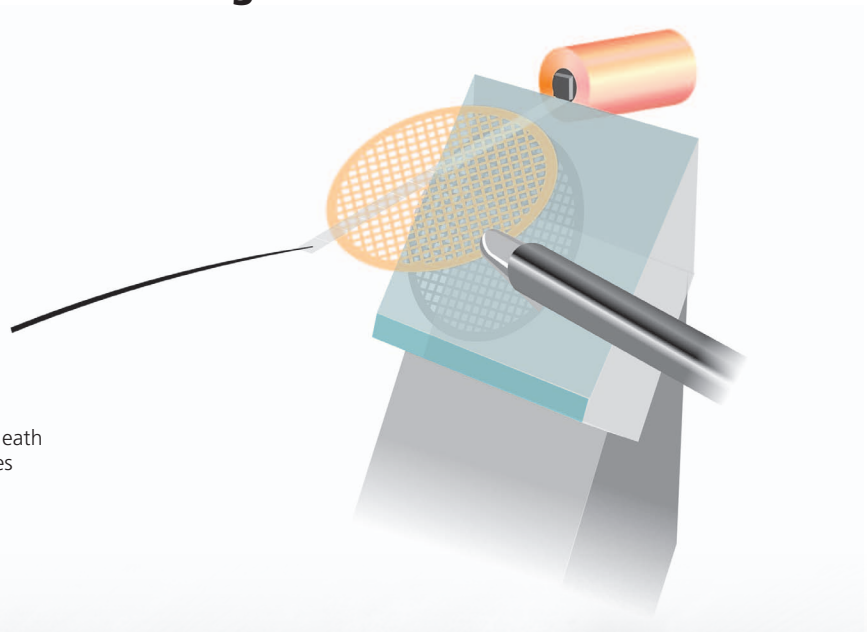


DIATOME manip

**For an easy handling and mounting
of section ribbons!**



A section ribbon attached to a fibre is depicted emerging from a diamond knife edge (left) beneath the ribbon the grid attached to a holder touches the section ribbon.

DiATOME manip

Which applications?

- Frozen hydrated biological samples (CEMOVIS)
- Room temperature sectioning of water sensitive samples
 - Dry resin sectioning of biological samples for chemical analysis
 - Dry sectioning of industrial samples such as polymers

How does it work?

- The left manipulator moves a conductive fibre on which the sections are attached by electrostatic force; the growing ribbon is guided.
- The right manipulator guides the grid very precisely below the section ribbon, the sections are attached to the carbon film with electrostatic force.

On which instrument can it be mounted?

- Leica cryochambers FC6 and FC7 equipped with a Crion ionizer/charger (adaption on other cryochambers on request).

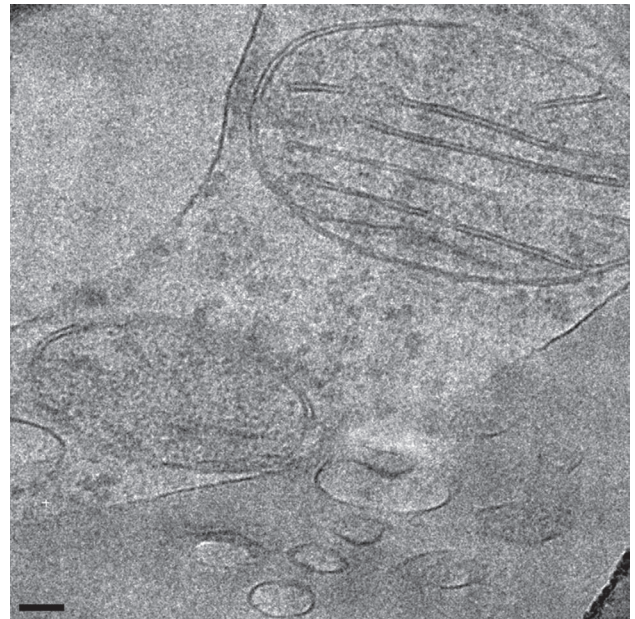
The cryosectioning approach is described by Studer et al.: A new tool based on two micromanipulators facilitates the handling of ultrathin cryosection ribbons. *J. Struct. Biol.* 2013.

See technical note on our website www.diatome.ch in the rubric «accessories».

The mounting of the manipulator is easy

The original plate on the cryochamber is removed, the manipulator is fixed in 5 minutes.

Order number: DZ100-01



▲ A cryosection showing vacuole, mitochondria and filopodium of a cultured cell. C. Peitsch and I. Lavocache, Inst. of Anatomy, Bern. Bar 100 nm

Contact us for more information!

Diatome Ltd
Helmstrasse 1
CH-2560 Nidau
Switzerland
Phone +41 (0)32 332 91 13
diatome@diatome.ch
www.diatome.ch